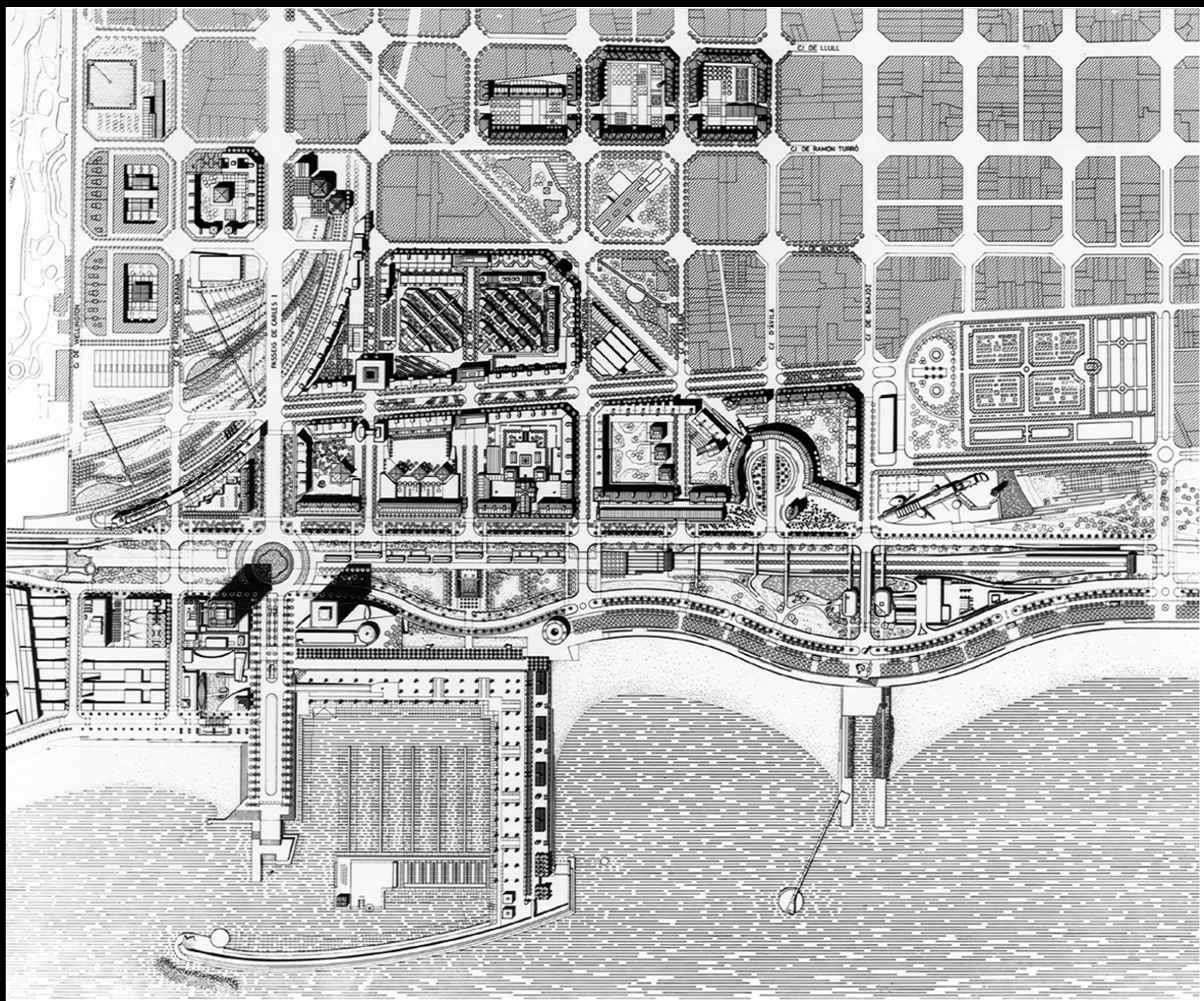
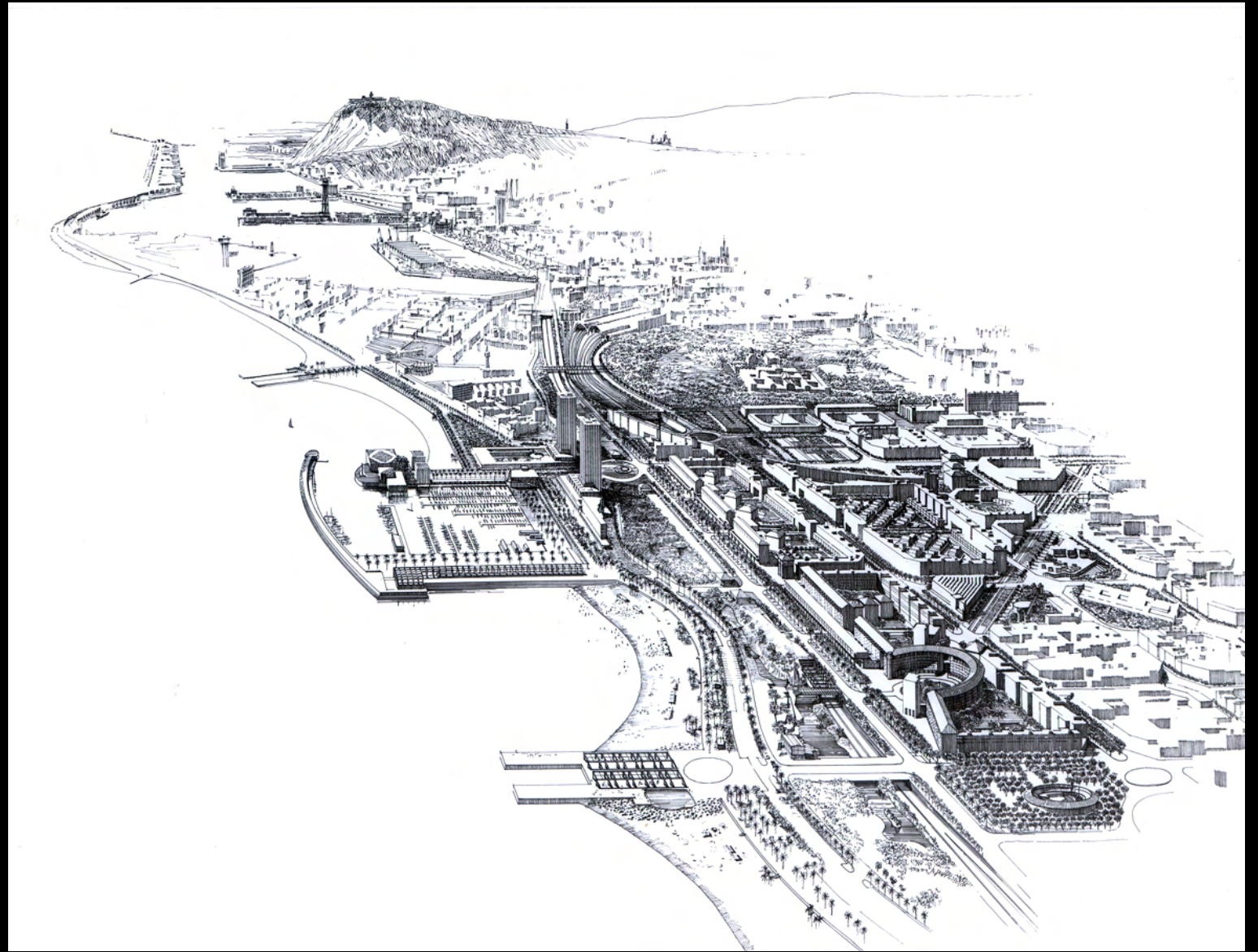
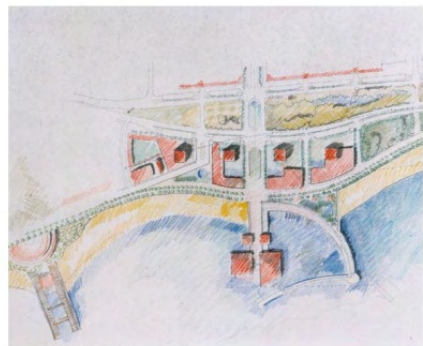
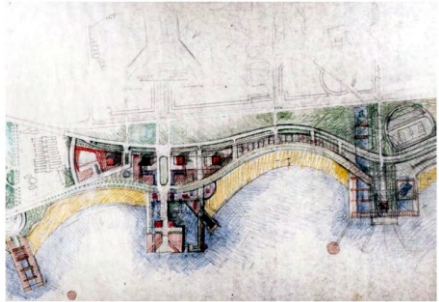
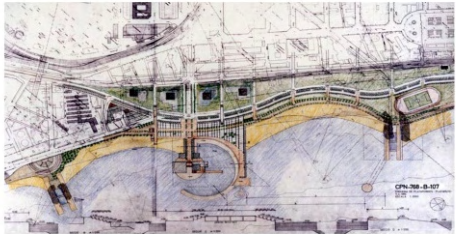
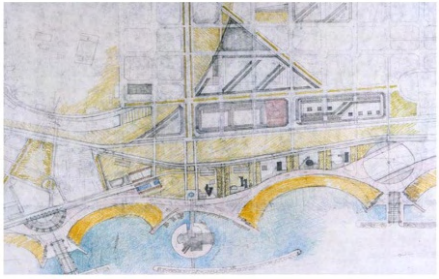


MBM JOSEP MARTORELL
ARQUITECTES ORIOL BOHIGAS
DAVID MACKAY
ORIOL CAPDEVILA
FRANCESC GUAL

Massimo del Seppia, architetto / Andrea Pasqualato, architetto / Alessio Accorromi, architetto / Sandro Ghezzani, architetto



Villaggio e Porto Olimpico di Barcellona (Spagna) 1985-1992







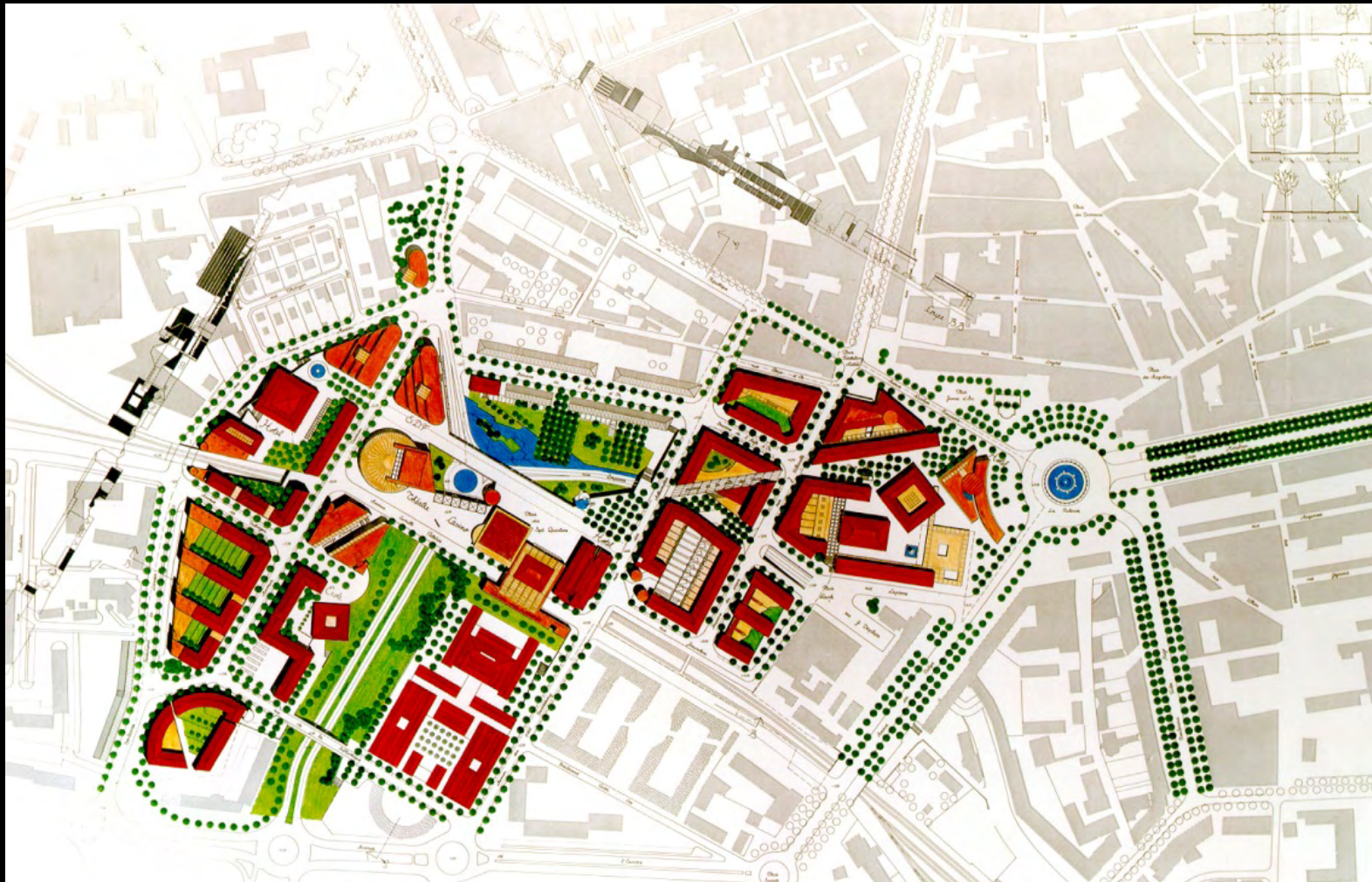
1989



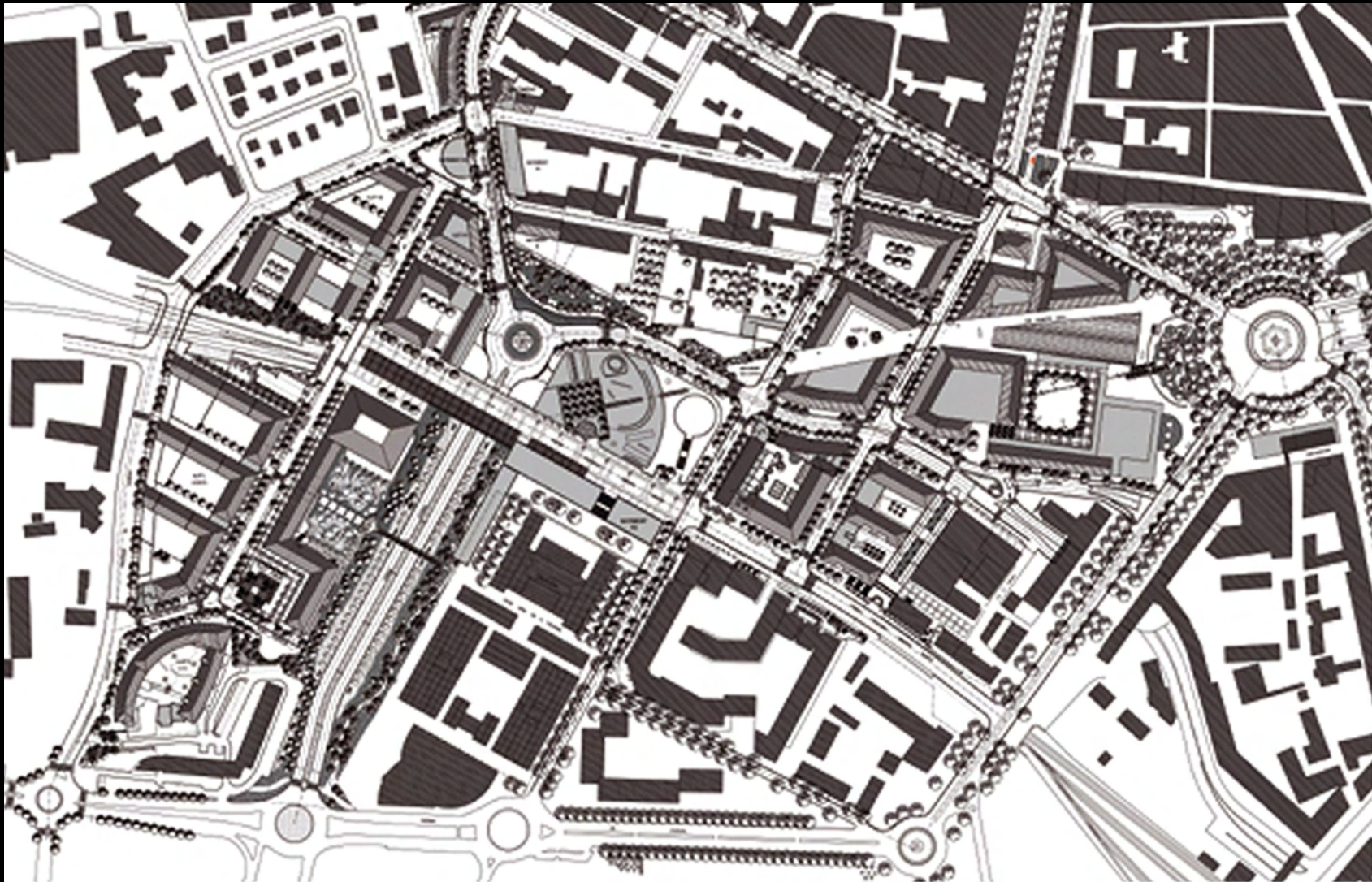
2011



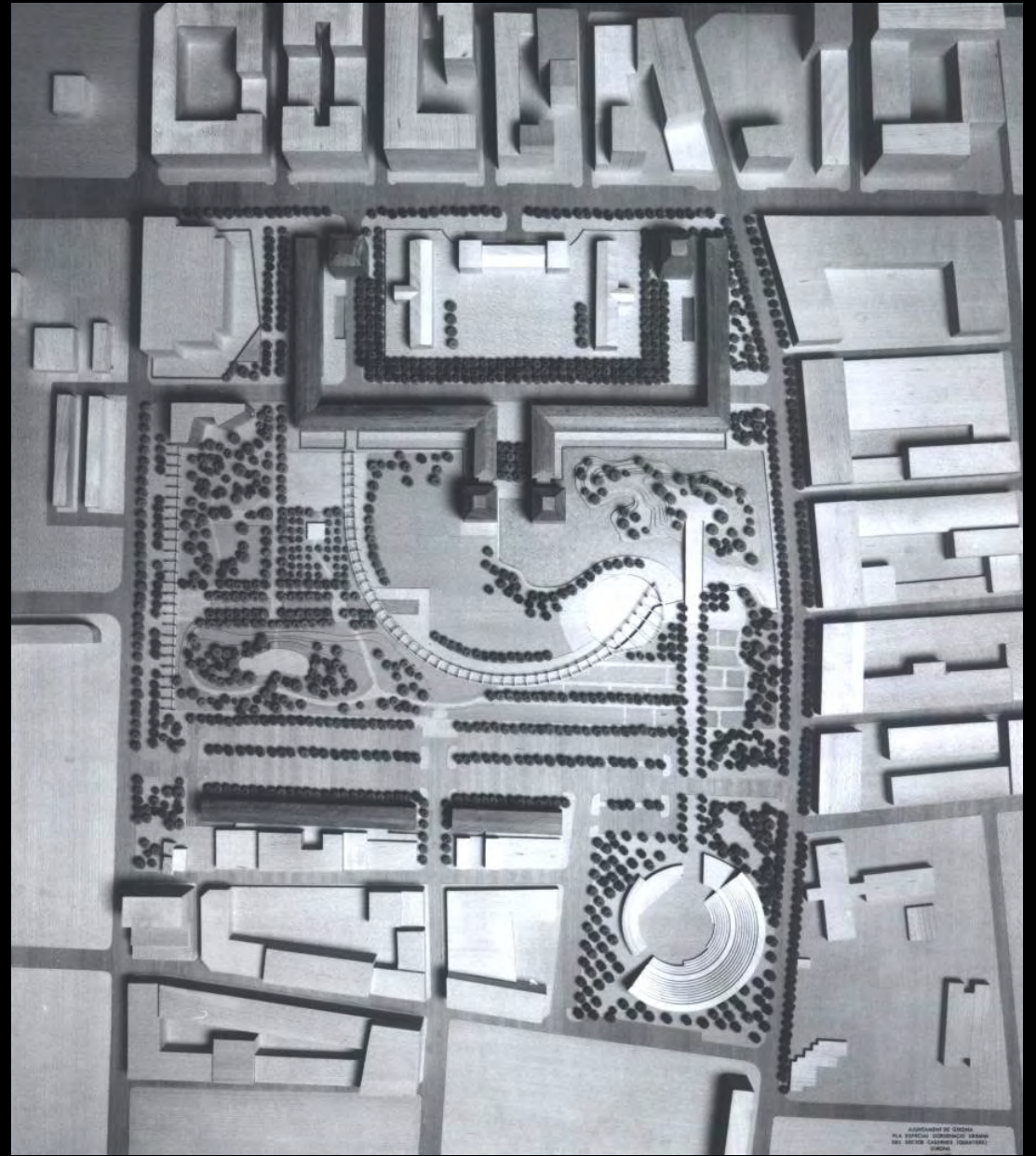
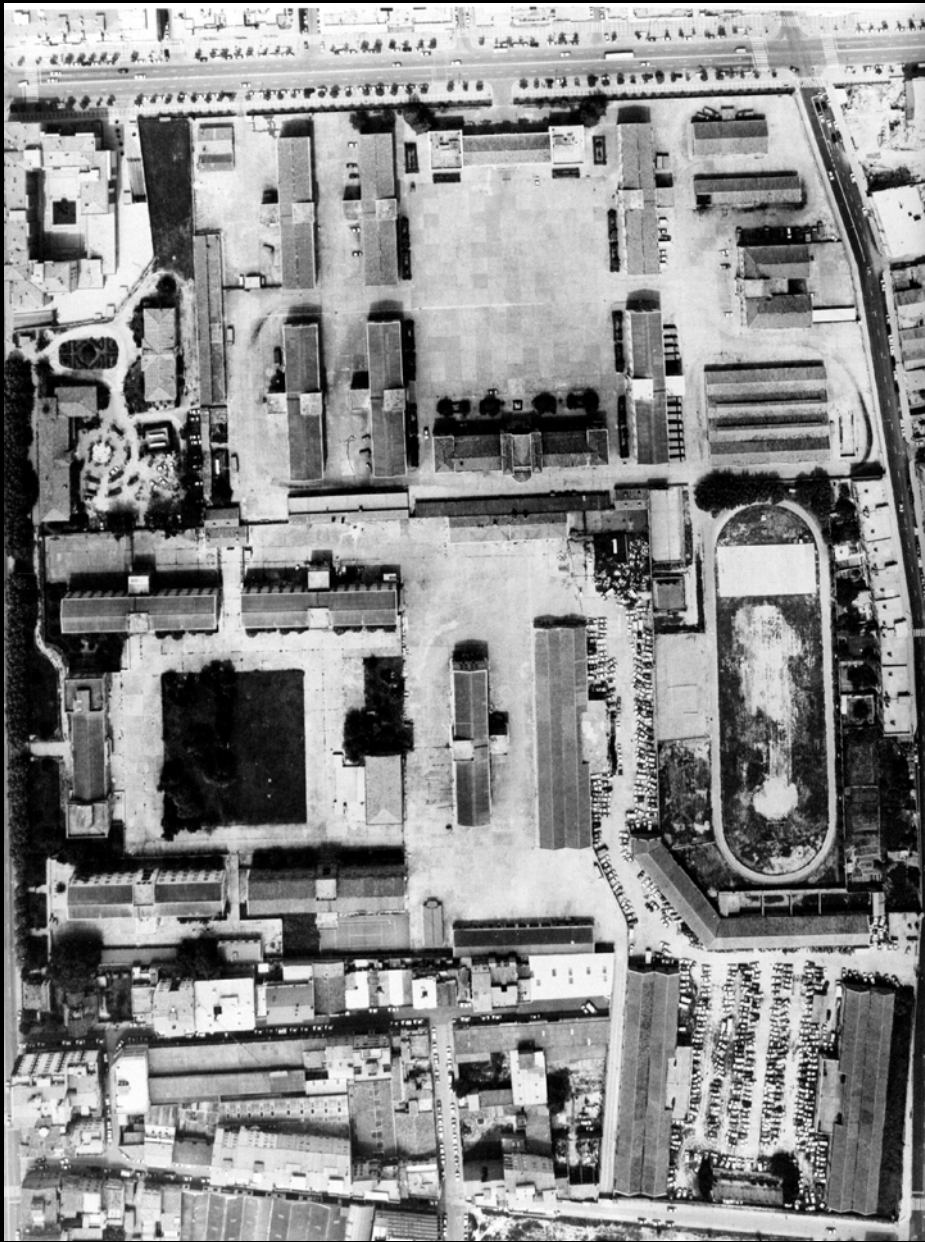
Intervento Sextius-Mirabeau. Aix-en-Provence (Francia) 1990 – in corso











Parco del Migdia e urbanizzazione dell'intorno. Girona (Spagna) 1993-2007

CARRER D'EMILI GRAHIT

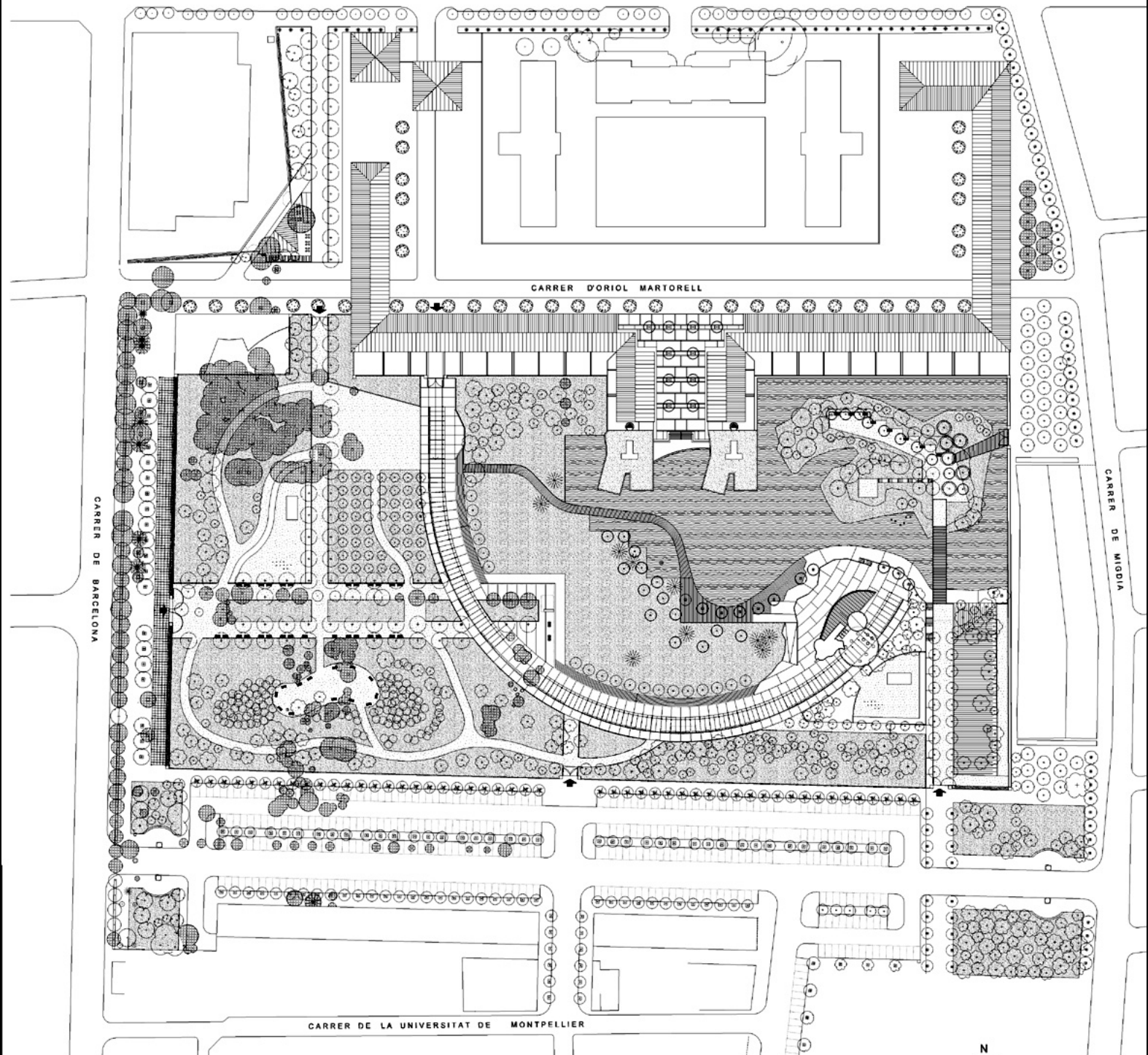
CARRER D'ORIOL MARTORELL

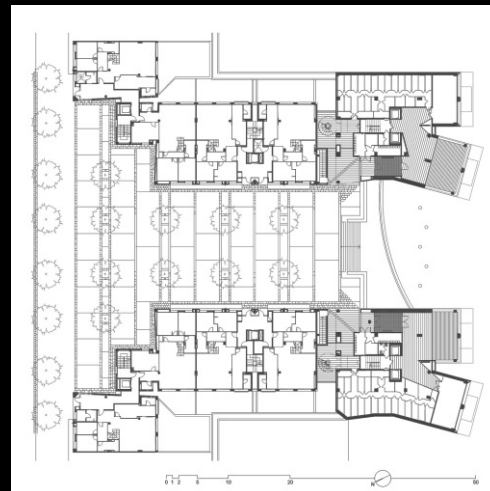
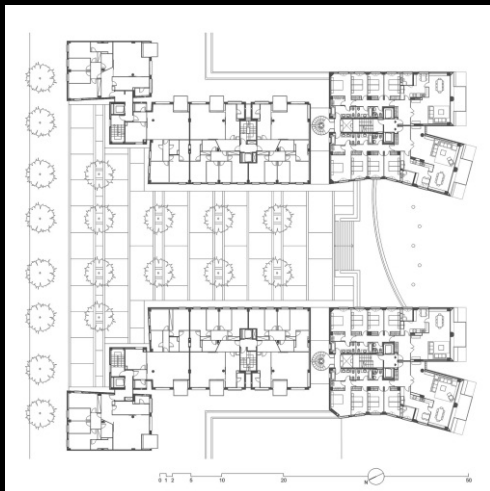
CARRER DE BARCELONA

CARRER DE MIDDIA

CARRER DE LA UNIVERSITAT DE MONTPELLIER

0 10 20 50 100 200

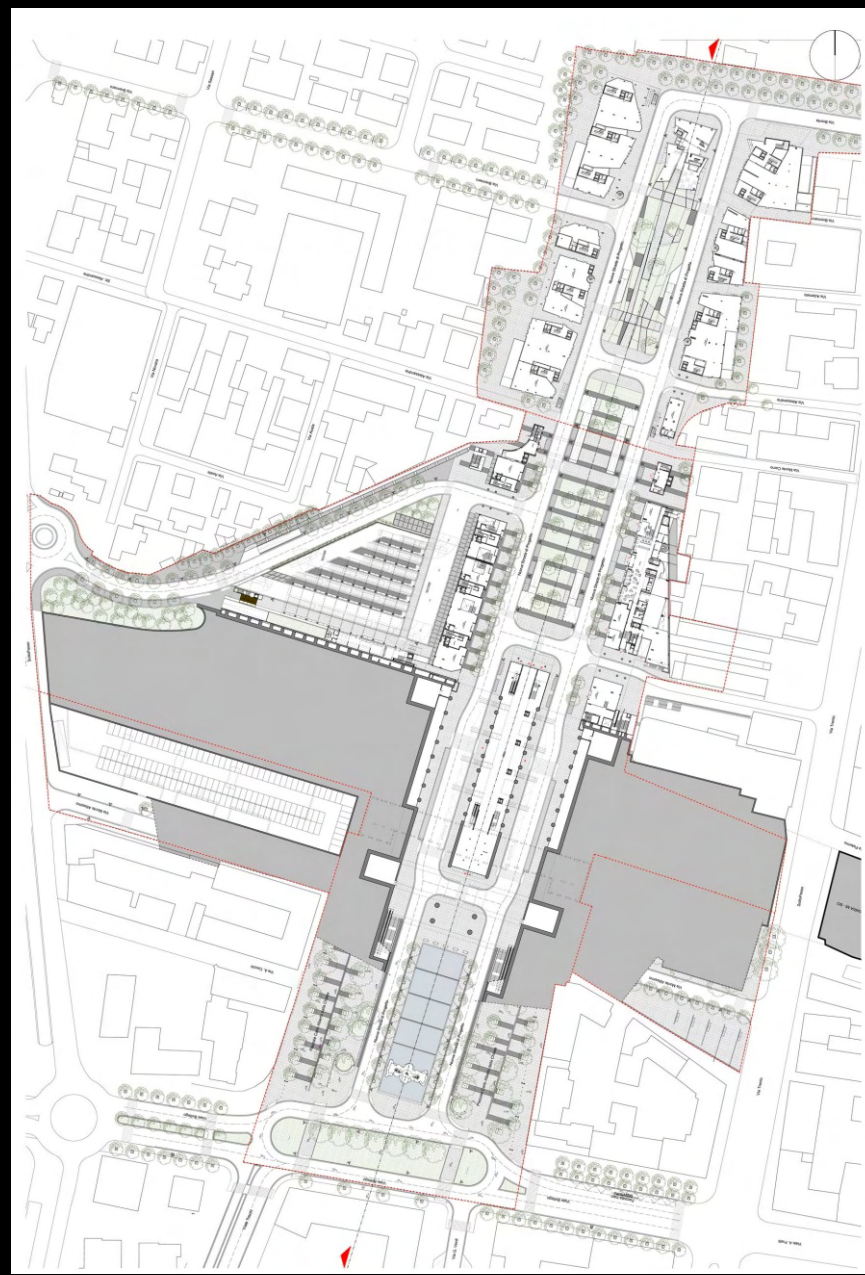
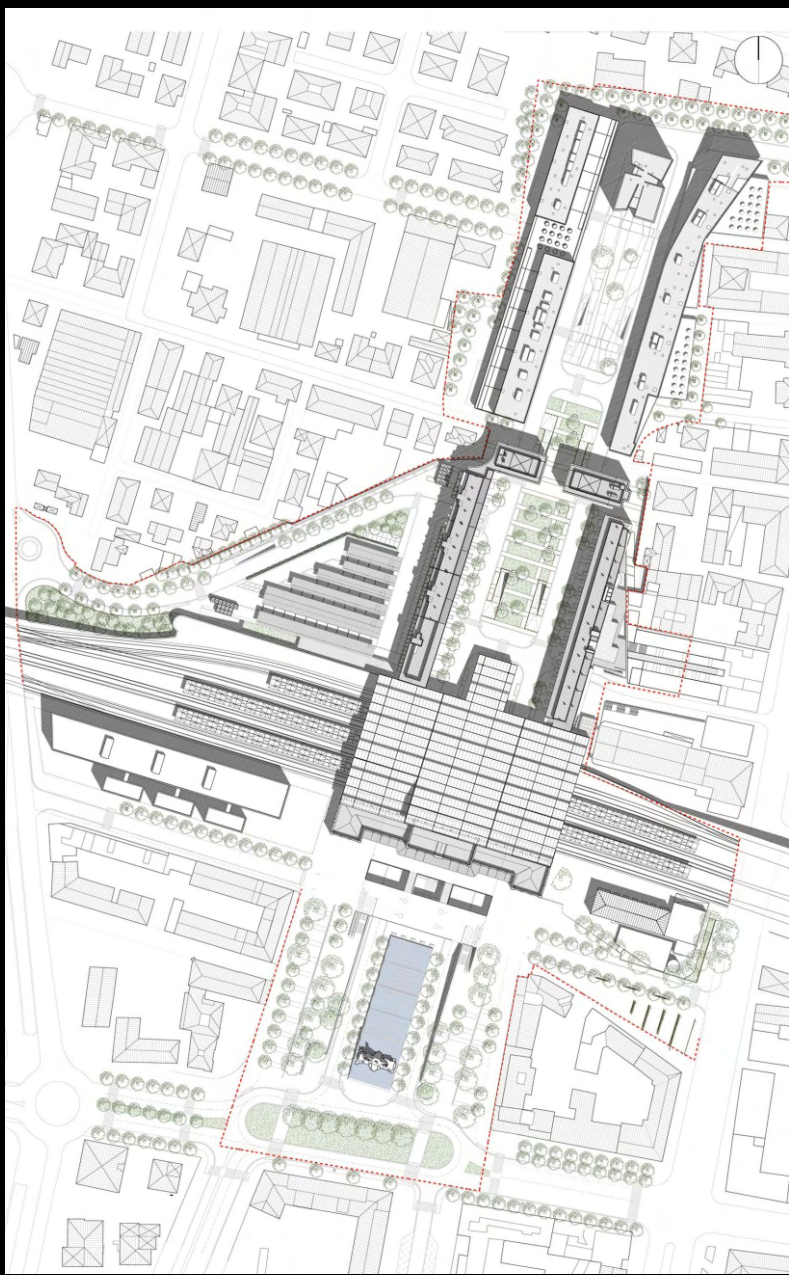






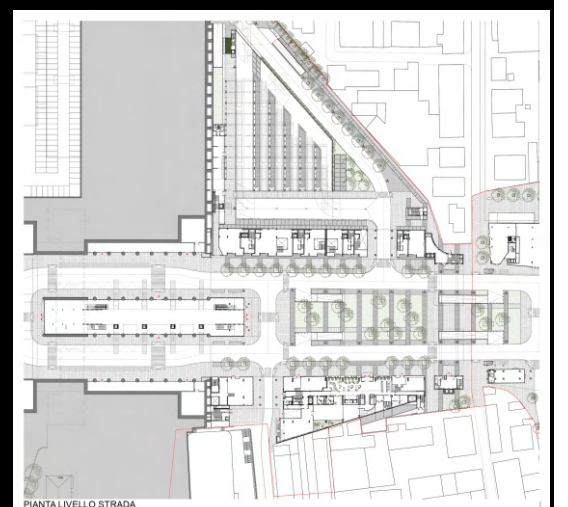
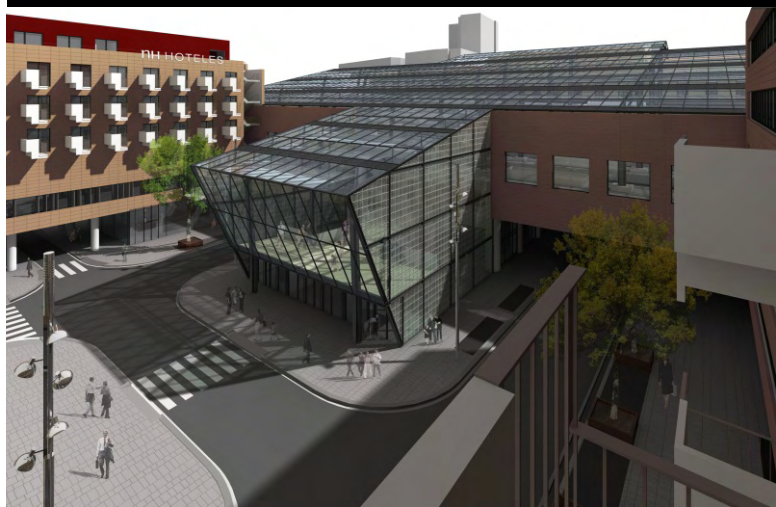


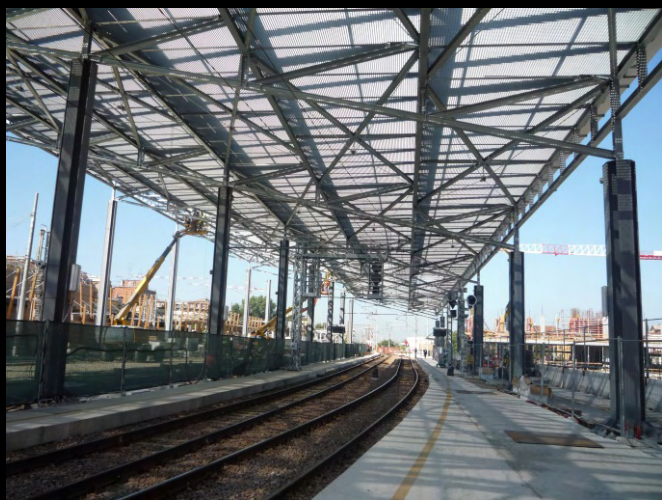
P.R.U. Stazione F.S. Ex Boschi. Parma (Italia) 1999-in corso



SEZIONE GENERALE









Fronte Marittimo. Catania (Italia) 2003-2004



